



**PRODUCT SHEET**

## **Cobi Cruise bariatric comfort wheelchair**

**Cobi Cruise comfort wheelchair. The most powerful wheelchair on the market for use in the rehabilitation of bariatric users.**

Cobi Cruise comfort wheelchair is used in care centres and hospitals, in home care and in private homes for bariatric users in need of a comfort wheelchair with a pressure-relieving seat.



**UP TO 325 KG**

- Used in all phases of rehabilitation, from the bedridden user to the mobile user.
- Cobi Cruise is equipped with tilt-in-space and recline functions which are activated via a controller and operated by both user and caregiver.
- Armrests that can swivel back or be “pushed down” for e.g., transfers or social activities at a table.
- Disinfectable and washable in laundry room at e.g., a depot or a hospital.
- Fits through most doorways.



## Cobi Cruise comfort wheelchair

Cobi Cruise is based on the challenges of a daily routine to improve quality of life for each bariatric user. Therefore, Cobi Cruise is evaluated by Danish bariatric users, thus contributing with valuable suggestions for improvement.

Driving a Cobi Cruise gives freedom. Freedom to move. From bedridden to independent. Cruise also means safety for both user and caregiver.

Features like push bar, electric tilt-in-space, and recline reduce the risk of physically overloading the caregiver, while still allowing maximum comfort, mobility, and social life for the user.

Cobi Cruise is designed entirely by Danish engineers and Danish occupational therapists and

### General comments

This product sheet contains important information about the use of Cobi Cruise and the target group for the wheelchair. It also includes a wide range of specifications on the Cobi Cruise.

The most recent version of this product sheet can be found on our website. Check if the version you are reading now is the most recent.

If you need a product sheet that is written in a larger font size, the product sheet is available in PDF format at [cobirehab.com](http://cobirehab.com), which can be scaled up to the required font size.

You can always contact Cobi Rehab on telephone +45 7025 2522 or e-mail [cobi@cobi.dk](mailto:cobi@cobi.dk) if you want

### Application

The Cobi Cruise comfort wheelchair is designed for indoor use, e.g., in hospitals, institutions and in care homes. The wheelchair can also be used in private homes. The wheelchair has a width that allows it to pass through most doorways.

The wheelchair is intended for bariatric users up to 325 kg whose ability to stand and walk is limited.

The intended operator of the wheelchair is a health professional, such as a therapist, nurse, or a social and health worker. The intended operator could also be the bariatric user with trunk stability

evaluated at House of Practice and Innovation at University College Copenhagen.

Cobi Cruise is produced in the EU and successfully evaluated with a 500 kg/1100 lb. load.

more information about Cobi Cruise comfort wheelchair.

Cobi Rehab reserves the right to change the product specifications without providing prior notice.

The UDI number of the wheelchair appears on the label, which is located on the side of the frame.

Product safety notices and product recalls can be viewed on the website.

and the ability to drive, control and stop the wheelchair.

The wheelchair can be used in ambient temperatures of 0°-40°C and a humidity of 20-80%.

The wheelchair can also be used outdoors but is primarily for indoor use.

## Construction

Cobi Cruise is constructed from S355, high-tensile steel. The rectangular steel profiles of the chair form the basis for its base frame. The base frame is made up of two mirror-inverted parts (a right and a left part) connected by a centre module. This structure allows the sides to be reused if the width needs changing.

The seat frame of the wheelchair consists of 30x30x2 mm high-tensile steel profiles. In addition, the seat frame has a 2 mm steel seat plate attached to it, which helps to distribute the pressure in the best possible way.

The back of the wheelchair consists of a high-tensile steel profile. The profile is positioned centrally on the back of the wheelchair. The angle of the profile means that the back supports both apple-shaped and the pear-shaped users. Three back plates are mounted on the profile. The back plates are curved to hug and support the user from buttocks to neck.

Pear-shaped users with voluminous backsides are ensured good back support, as the design of the "spine" of the wheelchair and its lower back plate provide space for the backside.

The upper two back plates ensure that apple-shaped users enjoy stable and comfortable back support.

The back cushion is divided into nine modules. Each module consists of two parts. A firm foam layer and layer with a mixture of polystyrene (Krøyer) beads and latex foam.

The foam layer faces the back of the wheelchair while the bead and foam layer are the one sat on by the user. The bead and foam mixture are modular and helps to increase the comfort of the wheelchair and its pressure relieving effect.

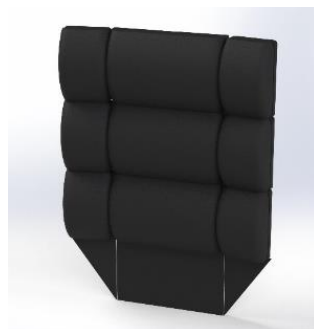
The contents of in each cushion module can be adjusted. This means that, according to professional assessment, the therapist or care staff can add or remove beads and latex foam. If necessary, a wedge cushion can also be inserted in one or more modules. The cushion contents are adjusted via the nine zippers located on the back of the cushion.

The modular cushion follows the shape of the back plates and, thus, ensures correct support regardless of user body shape and needs.

The modular cushion can be finely adjusted using a patented FitGo system known from ski boots and work shoes. The FitGo system is located on the back plates.



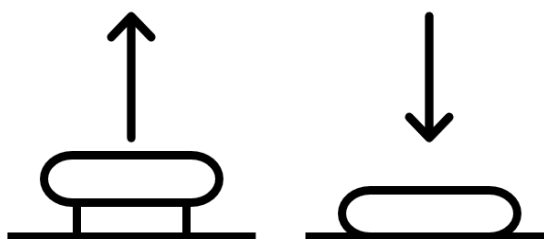
Curved plates hug and support the user from buttocks to neck.



The back cushion is made up of nine modules sewn into one large cushion.



Each module consists of a firm foam layer and a layer of beads and latex foam.



The FitGo system comprises an adjusting knob. The button is activated when pressed. If the button is to be loosened, pull it upwards and the cord pull is then released.

## The seat cushion

The base of the seat cushion consists of hard foam. The core of the seat cushion consists of memory foam specially selected for the target group.

The top is made of soft foam. The seat cushion is upholstered with a flame retardant incontinence cover.

## Push bar

The handlebar is flexible and adjustable, using a click system. Major adjustments can be made with tools. The bar has several grip points, depending on whether the chair is to be pushed or manoeuvred.

## Armrest

Extra-long armrests (615 mm) ensure stability and a good grip when the user moves from a standing to a sitting position or vice versa.

The armrests can swivel back, making it easier to move the user from e.g., the chair to the bed. The armrests can also be pushed down making it possible to move the wheelchair close to the edge of a table, allowing the user to participate in social activities there.

The armrests are padded for extra comfort and "cup-shaped" thus reducing the risk of pressure ulcers. Each armrest can withstand a maximum load of up to 200 kg.

## Leg rests

The leg rests each support up to 200 kg and are adjustable in both height and position. They also have a swivel function that allows easier access to and from the wheelchair.

The angle of the foot plates, the height/angle of the leg rest and the angle of the calf plates can be adjusted without tools.

The flexibility of the leg rests means that the user's legs can always be supported. This benefit inter alia, users with a significant tissue on their inner thighs.

The leg rests may be removed without the use of tools without affecting stability.



The seat cushion is made up of three diverse types of foam.



Swiveling armrests allow positioning near table.



Leg rests each supporting up to 200 kg.



The leg rests can be dismantled without using tools.

## Neck support

The wheelchair neck support is an option. The wheelchair is supplied with a universal neck support bracket, allowing for the installation of different types of neck support.

## Wheels

Cobi Cruise is equipped with two 24" drive wheels. The drive wheels can be placed in five different positions (with tools).

The two front positions are intended for the active user, who thereby gets easier access to the wheels. The three rear positions are intended for the passive user who is not expected to drive the wheelchair.

## Brakes

The two parking brakes are located on each side of the frame and can be operated by both user and caregivers.

The disc brakes are operated by means of a brake lever mounted on the push bar. The brake lever can only be operated by the care staff.

## Actuators

The Cobi Cruise has three actuators. Two seat actuators and a back actuator. The two seat actuators control the tilt-in-space function. The seat actuators are installed under the seat.

The back actuator controls the recline function. The back actuator is also installed under the seat.

## Anti-tip

Cobi Cruise is installed with anti-tip that can be adjusted to suit the terrain.

## Charger

The Cobi Cruise must be charged until the battery indicator reaches 100%. A full charge can take up to two hours.

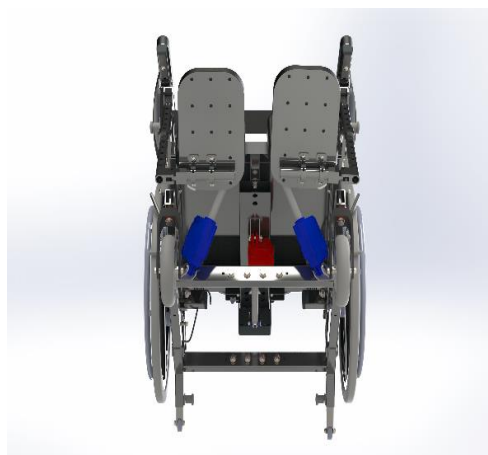
It is possible to use the functions of the wheelchair during charging.



A universal neck support bracket permits the installation of several types of neck supports.



Cobi Cruise is equipped with both hand brakes and disc brakes.



Two actuators (marked blue) control the tilt-in-space function. One actuator (red) controls the recline function.



## The control box

The control box is installed on the base plate.

The electronics are IPX6-classified. This means that the wheelchair and its components can withstand high pressure and heavy sprays of water.

The electronics of the wheelchair does not disturb the operation of units in the surrounding environment which emit electromagnetic fields,

e.g., alarm systems in shops, automated doors, etc.

The running characteristics of the wheelchair do not affect electromagnetic fields emitted by e.g., laptops and electricity generators.

## Electric tilt-in-space and recline

Negative tilt aids the independent user in safely getting in and out of the wheelchair. Negative tilt means that the front of the seat cushion is lowered. This reduces the access height which, in turn, makes getting in and out easier for the independent user.

The function negative tilt is activated using the controller.

Recline provides the apple-shaped user with supported and comfortable seating. When the back of the wheelchair is tilted backwards, the pelvis of the user is automatically opened. This provides improved respiration for apple-shaped users.

The recline function is controlled using the same controller as for the electric tilt-in-space function.

## Controller

The battery indicator is shown at the top of the remote control. Be sure to charge the wheelchair when the battery flashes in the red box.

The illustrations indicate which functions are activated by pressing the arrows. The arrows on the top illustration activate the recline function. The wheelchair can tilt from 90°-120°.

The arrows in the lower illustration activate the tilt-in-function from -4°-13°.

In the event of an irregularity, the RESET function must be activated. Press and hold down the two arrows, marked with a red dot, for 5 seconds, after which the various functions can be accessed again.

### The controller has:

- A battery indicator
- Tilt-in-space function
- Recline function
- RESET function



## Maintenance and cleaning

The Cobi Cruise is easy to clean. If the seat needs disinfecting, remove, and disinfect it using ethanol 70-85% or a chlorine product of min. 1000 ppm and max. 10000 ppm.

Clean the frame, seat and arm rests of the wheelchair using water and a regular cleaning agent.

Cobi Cruise comfort wheelchair can be disinfected or washed in a laundry room at e.g., a depot or a hospital.

The controller can be disinfected using ethanol 70-85% or a chlorine product of min. 1000 ppm and max. 10000 ppm.

## Transport and storage

When the wheelchair is not in use, store in a dry place at a temperature between -10°- 50°C.

The Cobi Cruise is suitable for land and/or air transport (when not accommodating a user). The Cobi Cruise cannot be folded as it has a fixed frame. To avoid injuries to e.g., the back, we advise against carrying the 100 kg wheelchair. The wheelchair can be lifted by the frame if it is to be transported (without a user) in a motorised vehicle.

Cobi Cruise can be used as a seat for a bariatric user in a motor vehicle.



## Long-term storage

When storing the Cobi Cruise for longer periods of time (3+ months), store the wheelchair at 0°-30° degrees and in a humidity not exceeding 75%.

We recommend charging the battery to 40-60% prior to storage.

When putting the wheelchair into use again after long-term storage, connect it to the supply and charge it for at least two hours. Keep an eye on the battery capacity as the wheelchair will discharge over time.

## Specifications

Max. user weight	325 kg
Risk class	I
Basic UDI DI	5740000100023N6
Expected product service life	Minimum 7 years
Crash-tested	Yes, according to ISO 7176-19
Seat depth	480-600 mm, at 30 mm intervals
Back angle	90°- 120°, continuously variable
Seat angle	-4 - 13°
Height from front of seat to ground (Height stated without cushion. Add 100 mm if cushion included)	337-551 mm
Height of back rest	613 mm
Max. length excl. footrests / incl. footrests	Approx. 1246 mm - 1773 mm
Min. length excl. footrests / incl. footrests	Approx. 987 mm - 1054 mm
Seat width	550-800 mm, at 50 mm intervals. 100 mm between 700 and 800 mm
Max. total width	676-926 mm
Max. total height	1115 mm
Max. weight of wheelchair	100 kg
Max. downhill inclination	10°
Max. uphill inclination	10°
Max. sideways inclination	10°
Massive tyres	Massive tyres with PU core
Frame tubing (material)	Type-S355, high-tensile steel
Seat cushion filling	CMHR 50250 (base), Visco 45060 (core), CMHR 4038 (top), flame-retardant
Back cushion filling	CM 2740 (base), Cut latex and EPS-beads (the front), flame-retardant
Back and seat cushion	Covered in incontinence cover (G469 black), flame-retardant
Arm rest cushion	Foam (CMHR4250 and RF5060), cover durable imitation leather (Temskay Leather), flame-retardant
Cushion in foot and lower leg support	Foam (CMHR4038), cover durable imitation leather (Temskay Leather), flame-retardant
Push bar	Type-S355, high-tensile steel
Wheel forks	Aluminium
Footrest tubing	Steel
Foot plate	Type-S355, high-tensile steel
Turning radius (Pivot)	100-120 cm



Foldable	No
Battery	Li-Ion 24V 2,6 Ah
Three actuators	LINAK LA23
Control box	LINAK
Controller	LINAK HB30
Wheelchair, including components	DS/EN 12183: 2014, according to ISO 7176
IP-code	IPX6
Risk assessment	EN/ISO 14971: 2012
General requirements and test methods	EN 12182:2012

## Ordering

Model	Seat width mm	Seat depth mm	Max. total width mm	Item number
Manuel version with controller	550	480-600	670.6	0115-055-000
Manuel version with controller	600	480-600	720.6	0115-060-000
Manuel version with controller	650	480-600	770.6	0115-065-000
Manuel version with controller	700	480-600	820.6	0115-070-000
Manuel version with controller	800	480-600	920.6	0115-080-000
Manuel version with controller	900	480-600	1020	0115-090-000
Manuel version with controller	1000	480-600	1120	0115-100-000

Accessories and spare parts	Part number
Leg rest R	0115-999-006
Leg rest L	0115-999-007
Cobi Cruise IV-holder with installation bracket(s)	0115-999-090
Neck support	Contact us for the choice of neck support
For spare parts, please contact Cobi Rehab on telephone +45 7025 2522 or at <a href="mailto:cobi@cobi.dk">cobi@cobi.dk</a>	



**COBI REHAB**<sup>®</sup>  
The Positioning Company

---



**MANUFACTURER**

**Cobi Rehab**  
Fuglebækvej 1D  
DK-2770 Kastrup  
Danmark  
+45 7025 2522  
[cobirehab.com](http://cobirehab.com)